

Quality , Satisfaction and Professionalism

**EVERDIGM**

# ECP24ZXL

## Four-section ZR-FOLD



### BOOM SPECIFICATION

Folding type	4-section ZR-folding
Max. vertical reach	23.3m
Max. horizontal reach	19.8m
Max. depth reach	13.6m
Unfolding height	5.2m
Slewing angle	360deg.
End hose length	3(4)m
Delivery pipe dia.	125mm

### PUMP SPECIFICATION

Pump cell	2116
Control system	Closed Free Flow Hydraulic
Main pump	A4VG125x2
Concrete cylinder(mm)	230x2,100
Strokes No.(per min.)*	30 / 21
Concrete output(m <sup>3</sup> /h)*	160
Concrete pressure(bar)*	85 / 130
Transfer tube type	S2318
Volume of hopper	600L

\*Rod side. Ouput & pressure are theoretical data.

### FEATURE

Inductive proximity switch with indicator	Flushing water pump(30bar)	Twin wall pipe line
Single lip concrete piston	Auto lubrication system for hopper	Working light on boom
Hard-chromed concrete cylinders	Tungsten carbide for wear ring and plate	Safety(OSS) system
Greasing port on boom link and pedestal	Flap elbow(180-150mm) with cleaning port	Safety device for hopper
Working light on pedestal	Agitator motors on both side hopper	Auxiliary fuel tank on one side rear outrigger
Aluminum platform(non-skid)	Working light on hopper	

#### EVERDIGM HEAD OFFICE

49, Buyeong-gil, Jincheon-eup, Jincheon-gun, Chungcheongbuk-do, Korea  
Tel +82-43-530-3300 Fax +82-43-530-3429

#### JR EQUIPMENT

5/191 Sandy Creek Road  
Yatala QLD 4207 Australia  
www.jrequipment.com.au  
info@jrequipment.com.au  
Tel 1800EQUIPMENT

Authorized distributor of  
**EVERDIGM Concrete Pumps**



# ECP24ZXL

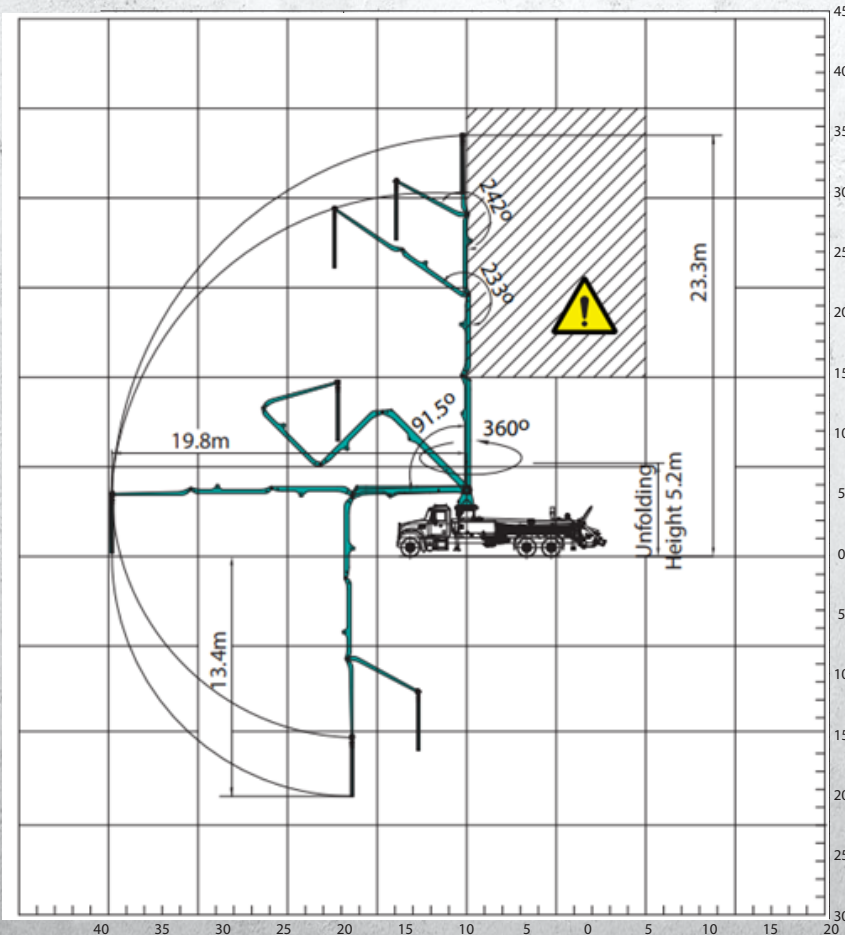
Four-section ZR-FOLD

G.V.W (Gross Vehicle Weight)=21ton



\*Dimensions may vary according to different truck makes, models, specifications, and options selected.  
 \*Weights are approximate and include pump, boom, truck, driver, and some fuel.

## WORKING RANGE



⚠ Don't use in caution area

UNIT : m

## OUTRIGGER SPREAD

